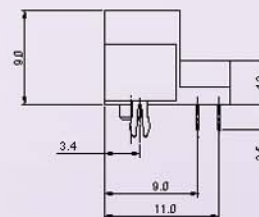
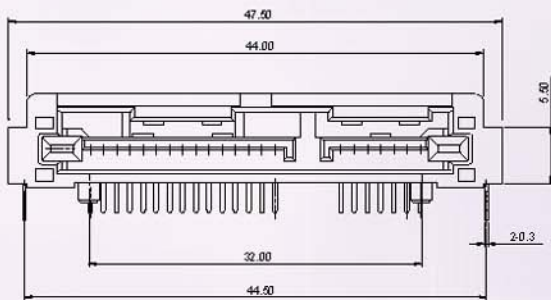
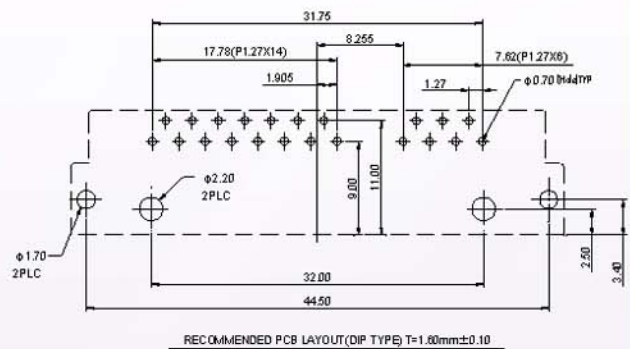
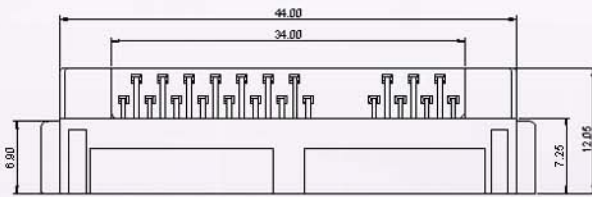
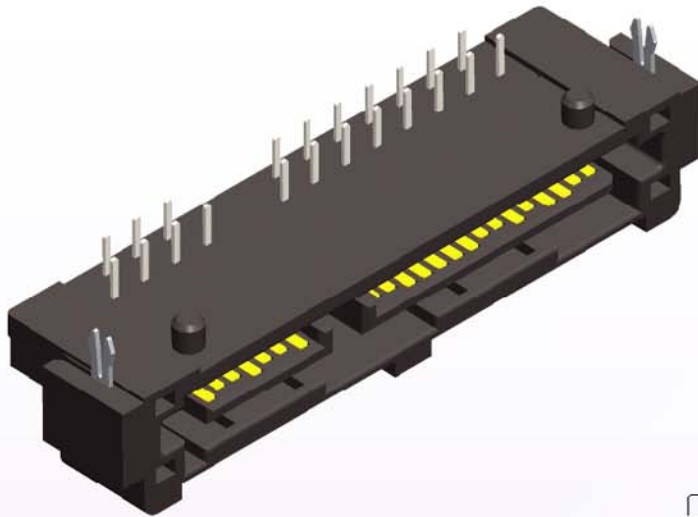


# SA522 Series

Serial ATA Connector, SATA 22P Plug DIP Type

Inverter Connector



## Ordering Information

SA522

Product Series

0

Housing Color

0: Black

2

Contact Plating

2: Contact Area: 3u" Gold Plated  
50u" Nickel underplated  
Solder Area: 100u" Tin Plated  
50u" Nickel underplated

1

Solder Length

1: Standard

LF

Remark

LF: Lead Free Matte Tin