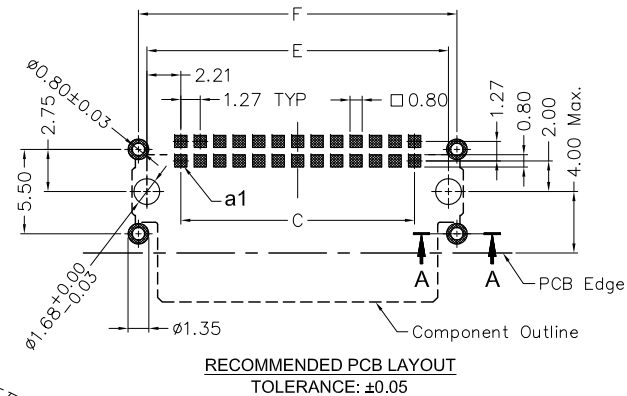
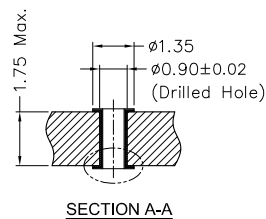
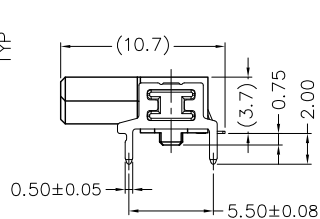
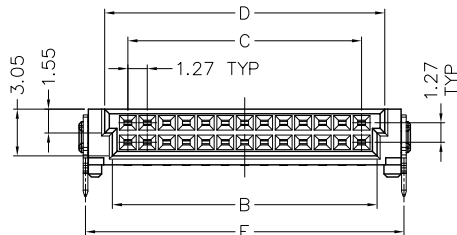


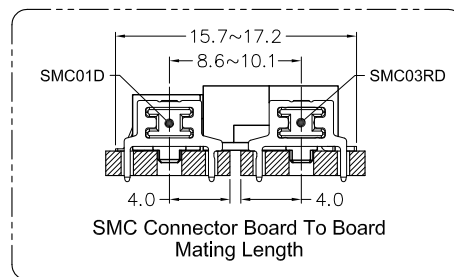
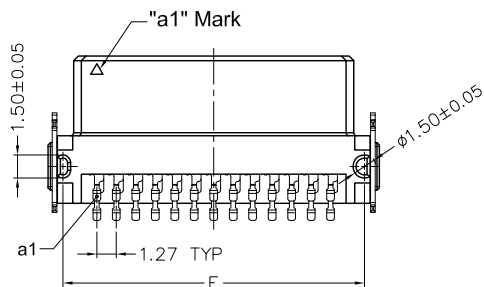
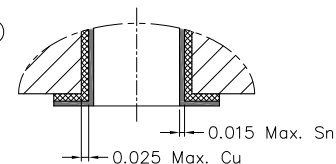
PART SECTION  
SCALE 2/1



RECOMMENDED PCB LAYOUT  
TOLERANCE: ±0.05



SECTION A-A



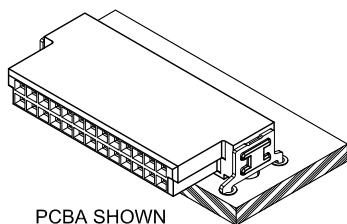
SMC Connector Board To Board  
Mating Length

< ORDERING INFORMATION >

SMC01D XX XXX 3

SERIES NO. 1.27 SMC Female Connector  
Dual Row R/A SMT Type  
(Board Lock Through-Hole)  
CONTACT POSITION See DIM-TABLE

PACKAGE 3: Tape & Reel  
CONTACT PLATING 600: Selective Gold Flash Plated  
(1μ" Min.) 605: 5μ" selective Gold Plated  
630: 30μ" selective Gold Plated



PCBA SHOWN

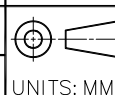
Specification

Insulator Material: High Temp. Thermoplastic, UL94V-0.  
Contact Material: Phosphor Bronze.  
Board Lock Material: Brass.  
Contact Plating: Au on Contact Area.  
Sn (100μ" Min.) on Soldertail.  
Nickle (Contact - 80μ" Min. / Soldertail - 50μ" Min.)  
Sn(100μ" Min.) over Nickle (40μ" Min.)  
Board Lock Plating: Sn(100μ" Min.) over Nickle (40μ" Min.)  
Current Rating: 1.7A Max.  
Contact Resistance: 25 Milliohms Max.  
Insulator Resistance: 1000 Megohms Min.  
Dielectric Withstanding: 500V AC for 1 Minute.  
Operating Temperature: -55°C ~ +125°C.  
Max. Processing Temp.: 230°C for 30~60 seconds.  
260°C for 10 seconds.

DIM-TABLE

PIN NO.	DIM A	DIM B	DIM C	DIM D	DIM E	DIM F
10	11.43	7.10	5.08	8.10	9.50	10.60
12	12.70	8.37	6.35	9.37	10.77	11.87
16	15.24	10.91	8.89	11.91	13.31	14.41
20	17.78	13.45	11.43	14.45	15.85	16.95
24	20.32	15.99	13.97	16.99	18.39	19.49
26	21.59	17.26	15.24	18.26	19.66	20.76
30	24.13	19.80	17.78	20.80	22.20	23.30
32	25.40	21.07	19.05	22.07	23.47	24.57
40	30.48	26.15	24.13	27.15	28.55	29.65
50	36.83	32.50	30.48	33.50	34.90	36.00
68	48.26	43.93	41.91	44.93	46.33	47.43
80	55.88	51.55	49.53	52.55	53.95	55.05

6		New Version	2021,05,11
REV.	DESCRIPTION	DATE	
DR. Shun	CHK. Ren	APP. Peter	



TOLERANCE (UNLESS SPECIFIED)  
X.X = ±0.25  
X.XX = ±0.15  
X.XXX = ±0.05  
ANG. = ±2°



TITLE: 1.27 SMC Female Connector  
Dual Row Right Angle SMT Type  
(Board Lock Through-Hole)

DWG NO. SMC01D-C

SHEET 1/1  
REV. A