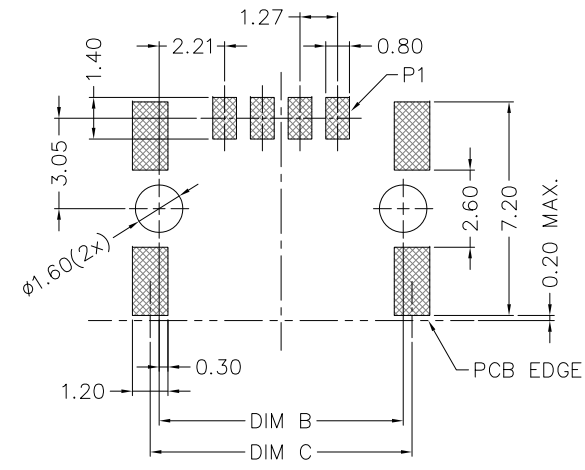
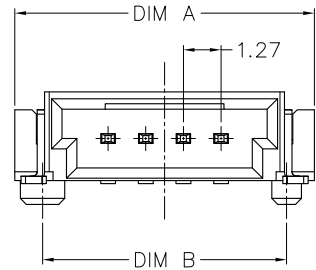


Specification

Insulator Material: High Temp. Thermoplastic, UL94V-0.
 Contact Material: **5** High Conductivity Copper
 Board Lock Material: Brass
 Contact Plating: Au on Contact Area
 Sn (100 μ " Min.) on Solder tail
 Nickle (Contact - 80 μ " Min. / Solder tail - 50 μ " Min.)
 Sn(100 μ " Min.) over Nickel (40 μ " Min.)
 Board Lock Plating:
 Current Rating: **5** 5A Max.
 Contact Resistance: 25 Milliohms Max.
 Insulator Resistance: 1000 Megohms Min.
 Dielectric Withstanding: 500V AC for 1 Minute
 Operating Temperature: -55°C ~ +125°C
 Max. Processing Temp.: 230°C for 30~60 seconds
 260°C for 10 seconds



RECOMENDED PCB LAYOUT
TOLERANCE: ± 0.05

DIM-TABLE

PIN NO.	DIM A	DIM B	DIM C
02	7.56	5.69	6.29
03	8.83	6.96	7.56
04	10.10	8.23	8.83
06	12.64	10.77	11.37
08	15.18	13.31	13.91
10	17.72	15.85	16.45
12	20.26	18.39	18.99

< ORDERING INFORMATION >

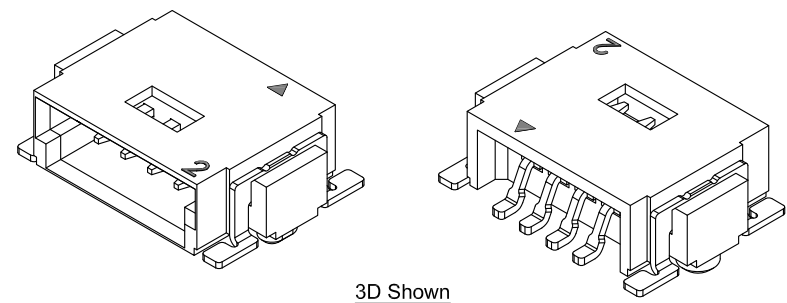
SMC06 XX XXX 3

SERIES NO. 1.27 SMC Male Connector
Single Row R/A SMT Type

PACKAGE 3: Tape & Reel

CONTACT POSITION See DIM-TABLE

CONTACT PLATING
 600: Selective Gold Flash Plated (1 μ " Min.)
 605: 5 μ " selective Gold Plated
 630: 30 μ " selective Gold Plated



5	Change Contacts Material	2020,05,04
4	Revised	2019,09,02
3	Add Mold mark	2019,07,02
1	New Version	2019,05,07

REV.	DESCRIPTION	DATE
DR. Shun	CHK. Ren	APP. Peter

UNITS: MM

TOLERANCE (UNLESS SPECIFIED)
 0.0 ± 0.35
 0.00 ± 0.20
 0.000 ± 0.10
 ANG. $\pm 2^\circ$



TITLE: 1.27 SMC Male Connector
Single Row Right Angle SMT Type

DWG NO. SMC06_P	SHEET 1 / 1
FILE PATH SMC\1.27\SMC06\SMC06-XX_P5	REV. 5