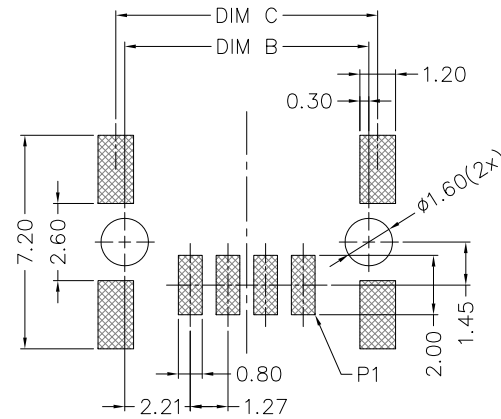
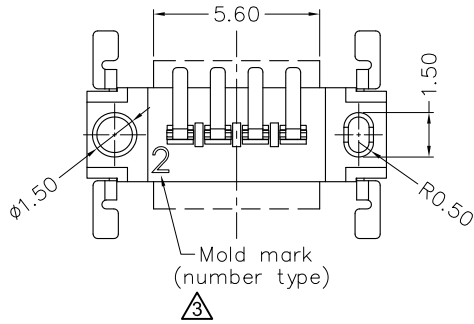
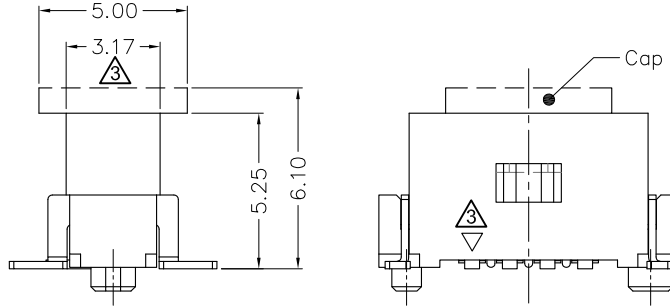
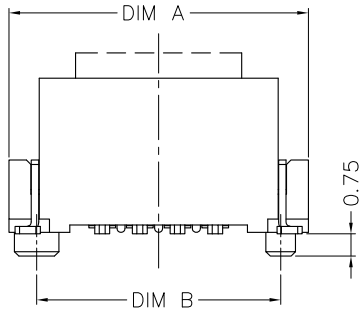
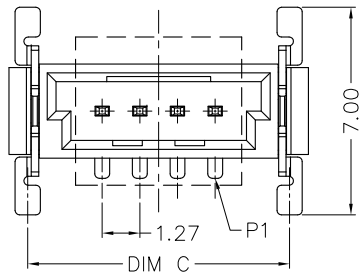


Specification

Insulator Material: High Temp. Thermoplastic, UL94V-0.
 Contact Material: $\triangle 4$ High Conductivity Copper
 Board Lock Material: Brass
 Contact Plating: Au on Contact Area
 Sn (100 μ " Min.) on Solder-tail
 Nickle (Contact - 80 μ " Min. / Solder-tail - 50 μ " Min.)
 Board Lock Plating: Sn(100 μ " Min.) over Nickel (40 μ " Min.)
 Current Rating: $\triangle 4$ 5A Max.
 Contact Resistance: 25 Milliohms Max.
 Insulator Resistance: 1000 Megohms Min.
 Dielectric Withstanding: 500V AC for 1 Minute
 Operating Temperature: -55°C ~ +125°C
 Max. Processing Temp.: 230°C for 30~60 seconds
 260°C for 10 seconds

DIM-TABLE

PIN NO.	DIM A	DIM B	DIM C
02	7.56	5.69	6.29
03	8.83	6.96	7.56
04	10.10	8.23	8.83
06	12.64	10.77	11.37
08	15.18	13.31	13.91
10	17.72	15.85	16.45
12	20.26	18.39	18.99



RECOMENDED PCB LAYOUT
TOLERANCE: ± 0.05

< ORDERING INFORMATION >

SMC07 XX XXX 01 3

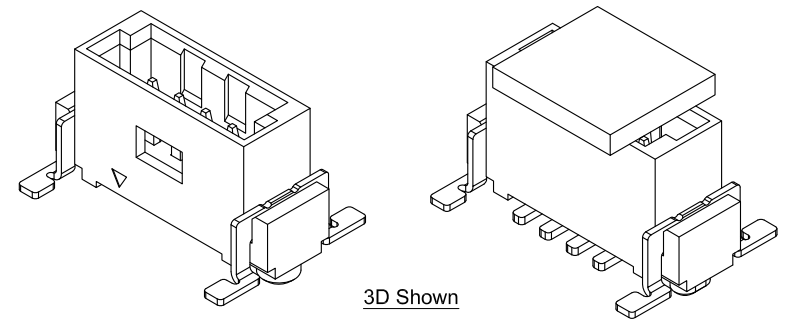
SERIES NO. 1.27 SMC Male Connector
Single Row Vertical SMT Type

CONTACT POSITION See DIM-TABLE

CONTACT PLATING
600: Selective Gold Flash Plated (1 μ " Min.)
605: 5 μ " selective Gold Plated
630: 30 μ " selective Gold Plated

PACKAGE 3: Tape & Reel

CAP CODE 01: Cap for SMT



3D Shown

$\triangle 4$	Change Contacts Material	2020,05,04
$\triangle 3$	Revised	2019,09,02
$\triangle 2$	Revised	2019,05,15
$\triangle 1$	New Version	2019,05,09

REV.	DESCRIPTION	DATE
DR. Shun	CHK. Ren	APP. Peter

UNITS: MM

TOLERANCE (UNLESS SPECIFIED)
 0.0 ± 0.35
 0.00 ± 0.20
 0.000 ± 0.10
 ANG. $\pm 2^\circ$



TITLE: 1.27 SMC Male Connector
Single Row Vertical SMT Type

DWG NO. SMC07_P	SHEET 1 / 1
FILE PATH SMC\1.27\SMC07\SMC07-XX_P4	REV. 4